

HMC3000-IMG-Li Honeywell® Battery



FEATURES

Highest quality cells used

Only the highest quality graded and sorted cells from Sanyo.

Longer cycle life

Excellent discharge characteristics, more charge cycles and higher capacity, all combine to provide longer cycle life, resulting in full shift operation.

Extremely rugged

High impact polymers are used for the casing making this an extremely durable product.

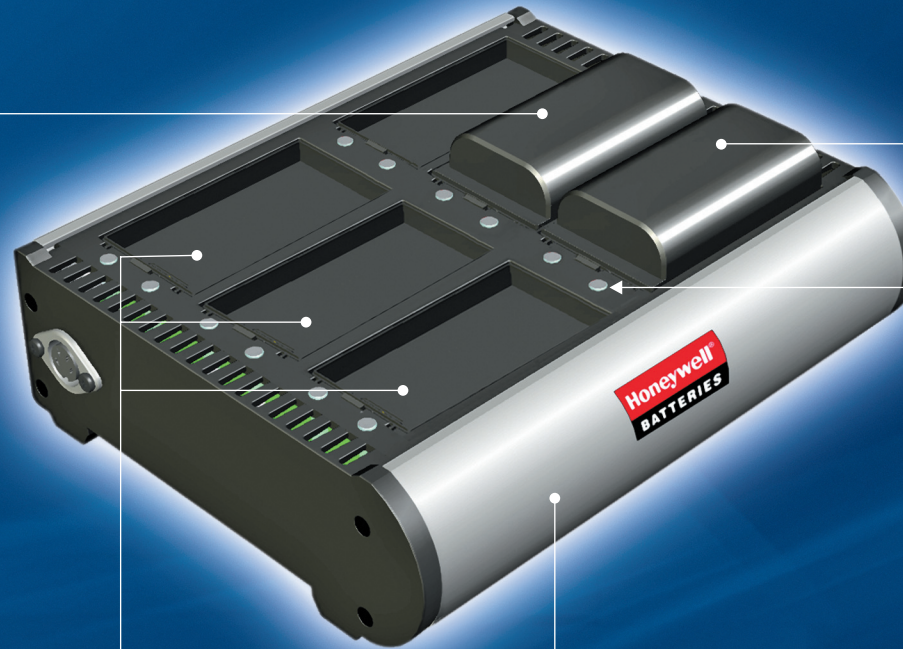
Rigorous testing

The product is subjected to rigorous quality testing, including UN/DoT testing for vibration, short-circuit, overcharge, shock, altitude simulation and temperature.



Trademarks are the sole property of their respective owners.

HCH-3006 Six-Bay MC3000 Battery Charger



Dual-chemistry charger

Supports Li-Ion and Li-Polymer chemistries.

Advanced '90 in 90' technology



The advanced '90 in 90' feature charges Honeywell® batteries to 90% capacity in 90 minutes.

Tri-color charging indications

A charging LED indicates charging status.



A solid Yellow indicates the battery is charging normally.



A solid Red indicates error, typically due to battery being too hot, or too cold to charge.



A solid Green indicates 100% charge.

More charging in less space

Charges 50% more batteries in same space as OEM charger.

Hassle-free mounting

Utilizes same mounting bracket as Symbol® chargers for easy wall mounting.

Honeywell® Batteries, Global Technology Systems, Inc.

One Apple Hill Drive, Natick, MA 01760-2012

Toll Free: 1-800-267-2711 ■ Fax: 508-650-5472 ■ www.honeywellbatteries.com

Honeywell®

BATTERIES

Mobile Power Solutions